

## Talis

### Single lever bath mixer for exposed installation

Surfaces: **Chrome** Article Number: **32440000**



#### Description

##### product features

- projection 158.5 - 166 mm
- connection type: s-shaped connections
- centre distance:  $150 \pm 12$  mm
- spray type mixer: normal spray
- flow rate for bath spout at 3 bar: 20 l/min
- flow rate of hand shower at 3 bar: 17 l/min
- ceramic cartridge
- min. operating pressure: 1 bar
- max. operating pressure: 10 bar
- temperature limitation adjustable
- with automatic resetting
- intrinsically safe against backflow
- with silencer
- suitable for continuous flow water heaters
- connection dimension: DN15

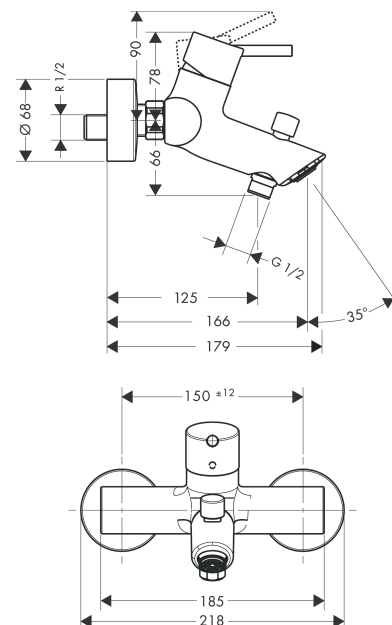
#### Technology



#### Product image



#### Scale drawing



**Talis**  
**Single lever bath mixer for exposed installation**  
 Surfaces: **Chrome**    Article Number: **32440000**



**Flowchart**

